

# WIRING INFORMATION

## Manufacturer

Chrysler

## Model(s)

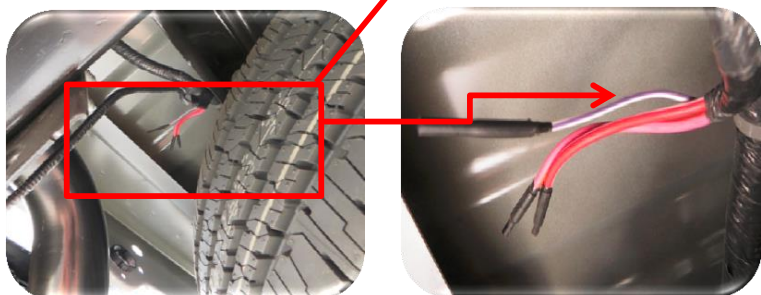
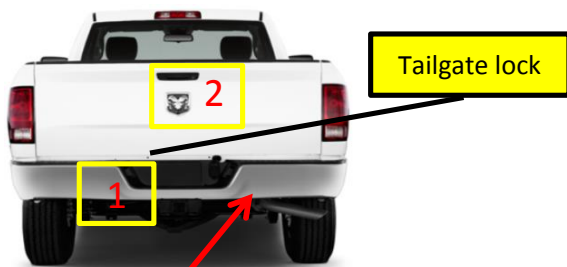
Ram 2500 /3500

## Years

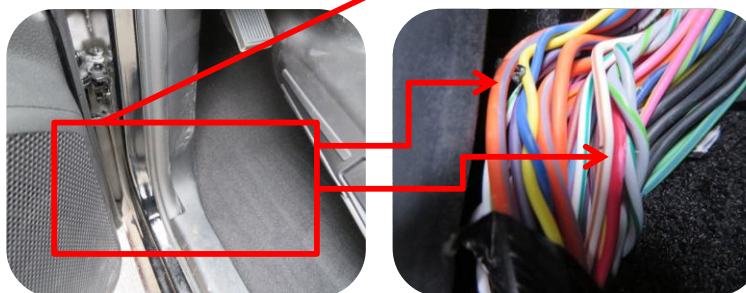
2014 +

## TAG Model Codes

64DR09 / 64DR09D / 80DR09D



CHMSL (White /Tan shown)



Lock (Orange/Grey or Tan/Green shown)

Unlock (Lime Green or Tan/White shown)

Keyless Wire Location

## CHMSL / Third Brake Light Wiring

### Years

2014 +

### Wire Color(s)

White / Purple

### Location

Passenger side cross member, near spare tire.

### Installer's Notes:

All wires should be tested prior to final hook up. On the 2014, you should go directly to the wire in which is provided from Ram for the brake light location. If you connect too many wires at once the computer will throw out problems to the brake light and dashboard. Connect the brake wire from cap to the wire provided from Ram. Turn the ignition key on. push on the brake pedal. The same process need to be done for the dome light as well. One step at a time.

## Keyless Entry Wiring

### Years

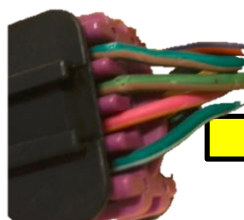
2014 +

### Lock Wire Color(s)

Orange / Grey

### Unlock Wire Color(s)

Lime Green / Grey



### Tailgate lock

Lt. Green / Tan

Green / Tan

### Location

Driver side kick panel / kick plate \* **With power tailgate lock go back 6" from the connector. 1 Carefully cut back the black factory tape, open the loom and pull out the wires or 2 Open the tailgate and remove the cover plate and grab the 2nd connector.**

### Installer's Notes:

All wires should be tested prior to final hook up. Test the lock wire first then the unlock wire by using computer safe tester. The 2014 Ram have low voltage going through the wires. Stander tester will not work.